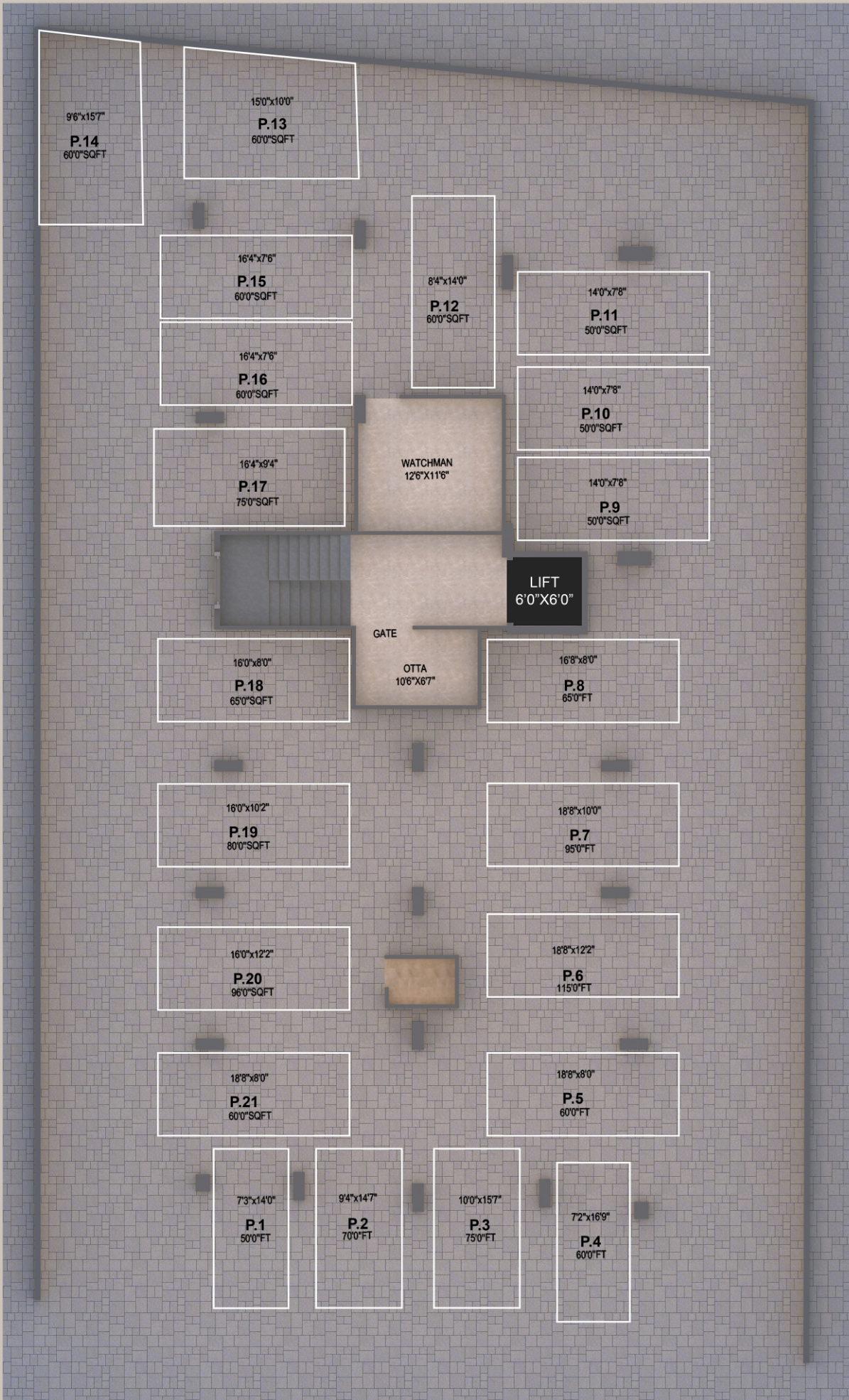




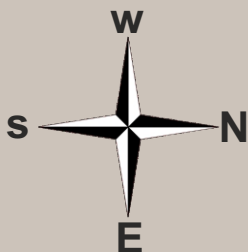
SHYAM AURA

3 BHK PREMIUM FLATS





GROUND FLOOR PLAN



TYPICAL FLOOR PLAN



Terrace View

AMENITIES

• Planning as per Vastushastra with Remedies

RCC Work

- RCC frame structure with standard ISI marks cement & steel.

Brick Work:

- External wall 6" & internal wall 4" thick.

Plaster Work:

- Double coated external plaster/Gypsum finish in internal wall.

Plumbing Work:

- Concealed plumbing with ISI marked CPVC material.

Electrification:

- Concealed electrification with sufficient points AC points. Inverters points and electric geyser points in bath.
- Polycab/KEI wiring.

Bathroom:

Well designed Tiles up to Slab Level. Provision of faucets, shower, diverter and Wall hung toilet.

Kitchen:

- Black Granite kitchen platform with service platform with stainless steel sink.
- Digital Tiles up to slab level.

- **Living room:** POP False ceiling with gypsum board.

Flooring:

- 2' x 4' GVT Flooring in Living. Wooden Finish vitrified tiles in master bed.

Door:

- All Doors are laminated with Granite Door Frame and wooden frame For main door.

Window:

- All windows are in granite frame with safety grill. Three track Powder coated sliding windows with glass and mosquito net.

Lift:

- Fully automatic SS. finish cabin with mandatory safety device & Battery backup.

Paint:

- Fully Apex Paint For Exterior & Emulsion Paint for Interior.

Parking:

- Anti-skid parking Tiles/paver Block.

Terrace garden/ Green gym / Cardio Room Yoga area

Security:

- CCTV Camera on Common Area. Thumb impression Lock System & Video call Door System



VIDEO DOOR PHONE



CHILDRENS PLAYING AREA



GREEN GYM



CARDIO ROOM

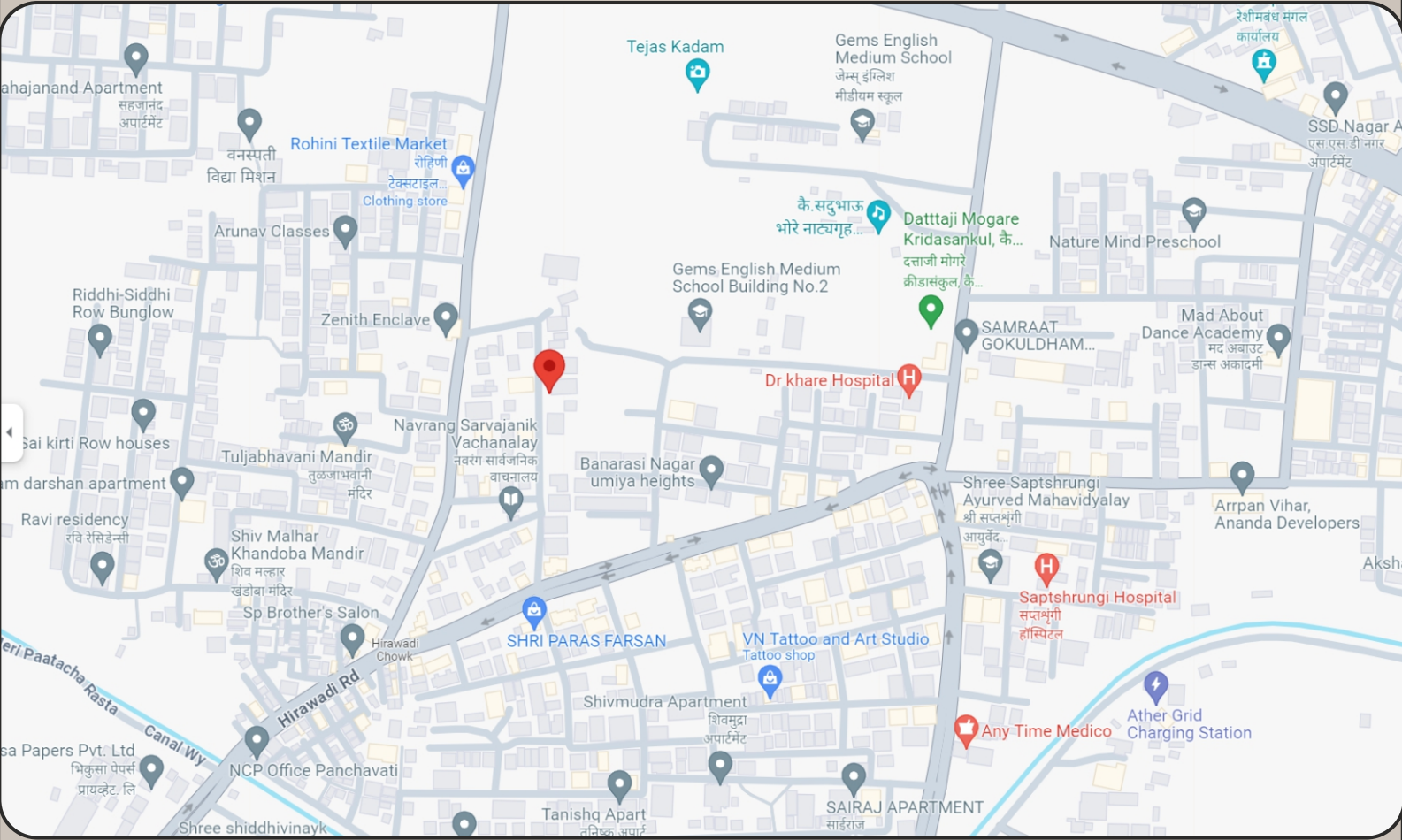


CCTV CAMERA



Security Lock

LOCATION PLAN



LOCATION ID:- 20°01'11.4"N 73°48'41.5"E

PROJECT NAME
SHYAM AURA



Visit Us

BOOKING CONTACT
+91 99752 01597

- ADDRESS -

Sr.No. 208, Plot No. 4, Bhausahab Hire Nagar,
Opp. Paras Farsan, Hirawadi, Nashik - 422003.